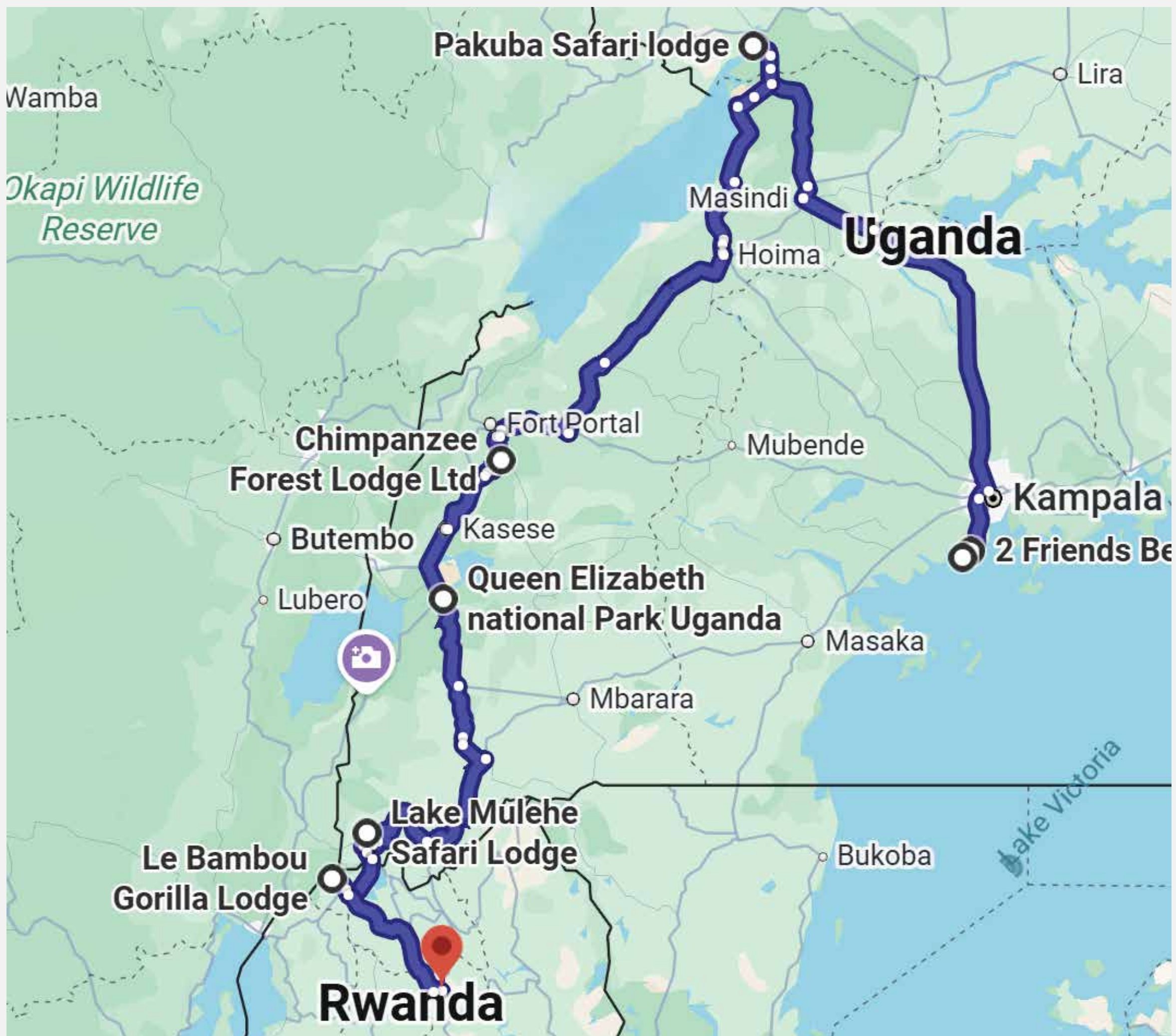




11 DAY UGANDA AND RWANDA SAFARI



UGANDA : ENTEBBE – MURCHISON FALLS – KIBALE FOREST –
QUEEN ELIZABETH NATIONAL PARK – BWINDI
IMPENETRABLE FOREST
RWANDA : VOLCANOES NATIONAL PARK – KIGALI

This detailed itinerary combines the best safari experiences in Uganda and Rwanda, showcasing diverse wildlife, breathtaking landscapes and rich cultural encounters. The journey covers iconic national parks as well as a variety of activities tailored to highlight each country's unique offerings.

ENTEBBE

Entebbe is a relaxed lakeside town on the shores of Lake Victoria. Known for its botanical gardens, birdlife and friendly atmosphere, it is the perfect introduction to Uganda. The town has a calm, tropical feel with warm breezes off the lake and a welcoming pace of life.

Accommodation

2 Friends Beach Hotel

- Two Friends Beach Hotel in Entebbe is a cosy, boutique-style retreat set right on the shores of Lake Victoria, just 10 minutes from Entebbe International Airport. Its warm decor, peaceful lakeside setting, and friendly service make it a welcoming stop for travelers looking to unwind before or after long flights. Guests can enjoy a private beach, a relaxed outdoor pool area, and beautifully decorated rooms—many offering lake or pool views and thoughtful touches like terrace seating and beds with mosquito nets. Visitors can choose between dining in the main restaurant and enjoying meals at the popular beach café, where lake breezes and open views create a laid-back, holiday feel.



Activities

Upon arrival at Entebbe Airport you will be met by your guide who will brief you on your safari and transfer you to the lodge.

Optional: Mabamba Swamp Shoebill Excursion

- For early arrivals, a Mabamba Swamp Shoebill Excursion offers an unforgettable wetland adventure on the shores of Lake Victoria, where visitors travel by motorised canoe through winding papyrus channels in search of the rare and prehistoric-looking Shoebill Stork. As one of Africa's most reliable shoebill habitats and a designated Ramsar Wetland of International Importance, Mabamba provides a peaceful, immersive experience surrounded by reeds, lilies, and over 260–300 bird species, including African jacanas, malachite kingfishers and papyrus gonoleks. Skilled local guides navigate narrow waterways while pointing out wildlife and sharing insights into the swamp's ecology and conservation significance.



MURCHISON FALLS NATIONAL PARK

Murchison Falls National Park is Uganda's largest and oldest conservation area. It is named after the dramatic waterfall where the Nile River is forced through a narrow seven-metre gorge before plunging 45 metres into the valley below. The park features savanna plains, riverine forests and the wildlife-rich Nile corridor. It is home to elephants, giraffes, lions, buffalo, hippos and countless bird species.



Accommodation

Pakuba Safari Lodge

A comfortable lodge located on the eastern bank of the Nile with views of the river and surrounding savanna. Wildlife such as giraffes and antelope often wander near the lodge.

Activities

Ziwa Rhino Sanctuary

- On the way to Murchison Falls you will stop at Ziwa Rhino Sanctuary for a guided rhino trekking experience. This is the only place in Uganda where rhinos can be seen in the wild.

Top of the Falls

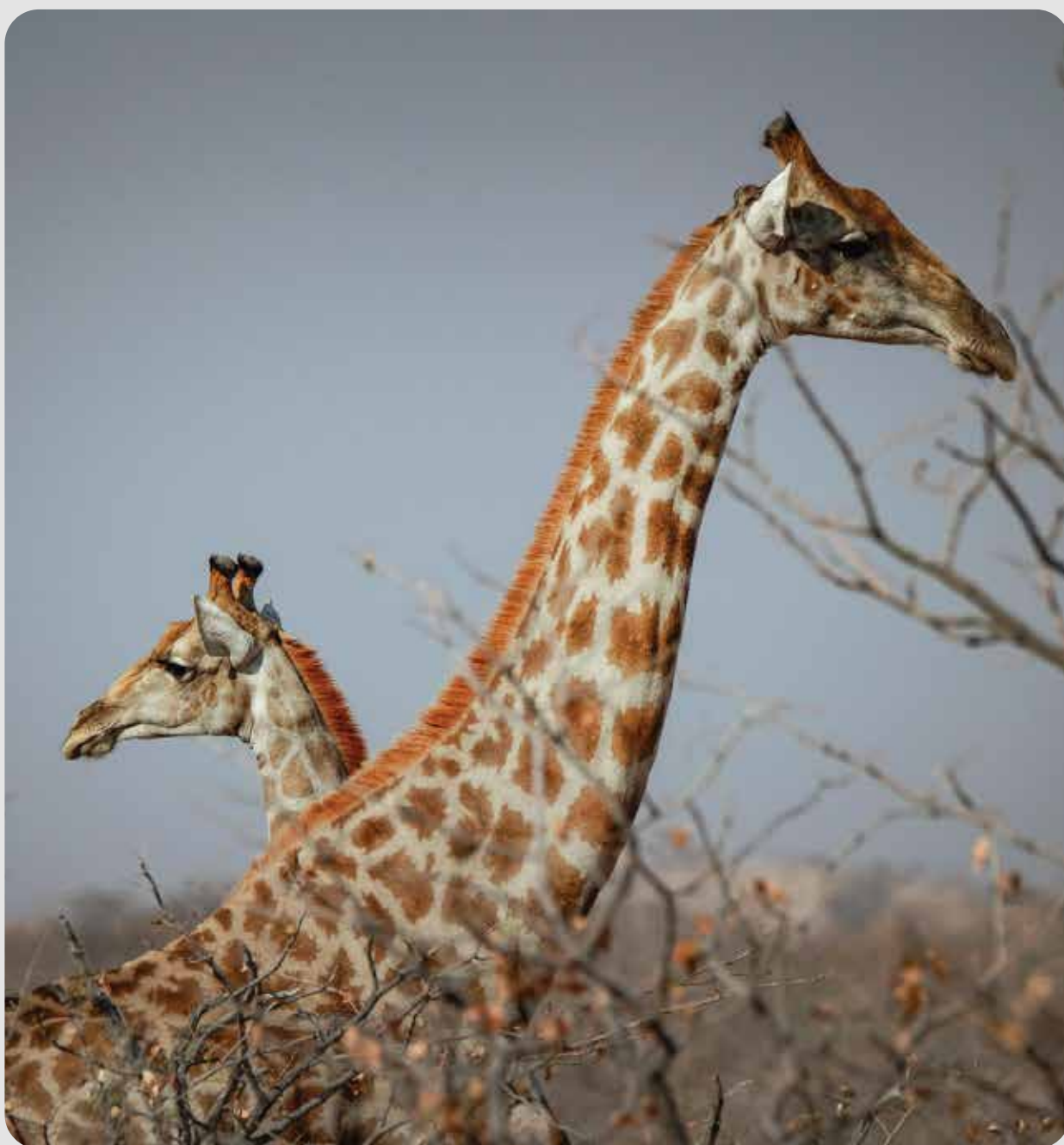
- Visit the top of Murchison Falls where the Nile explodes through a narrow gorge. The power and sound of the water are unforgettable.

Game Drive

- Explore the northern savanna plains where elephants, giraffes, buffalo, Uganda kob and lions roam. The open landscape offers excellent photographic opportunities.

Boat Cruise to the Base of the Falls

- A highlight of the safari. Cruise along the Nile past hippos, crocodiles, bathing buffalo and abundant birdlife. The boat brings you close to the base of the falls for dramatic views.



KIBALE FOREST

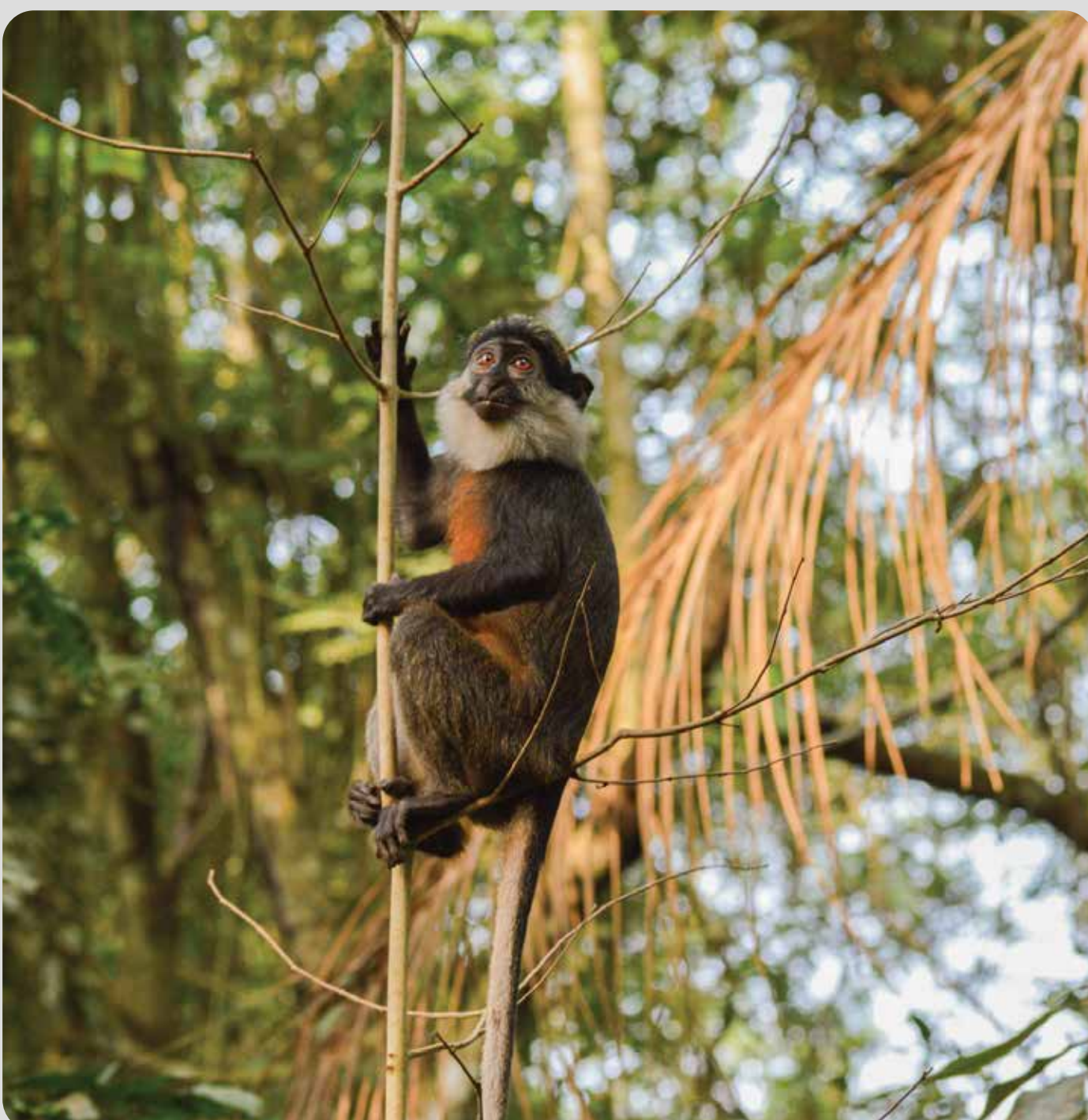
Kibale Forest National Park is known as the primate capital of East Africa. The forest is home to 13 primate species including chimpanzees, red-tailed monkeys and black-and-white colobus. The region features crater lakes, rolling hills and lush tropical forest.



Accommodation

Chimpanzee Forest Lodge

Your stay in Uganda is at a peaceful, historic hideaway set among tea plantations, crater lakes and indigenous forest. It offers restored colonial-style rooms, cosy cottages and easy access to chimpanzee tracking, bird-watching and nature walks in Kibale Forest.



Activities

Chimpanzee Trekking

- A guided trek through the forest in search of habituated chimpanzee groups. Kibale offers some of the best chimp sightings in Africa. You may also see other primates and forest birds.

Bigodi Swamp Walk

- A community-run wetland sanctuary known for its birdlife, including the great blue turaco. The walk offers a peaceful and scenic experience.

Optional: Crater Lake Walk

- The region is dotted with volcanic crater lakes surrounded by lush hills.

QUEEN ELIZABETH NATIONAL PARK

Queen Elizabeth National Park is one of Uganda's most diverse wildlife reserves. It features savanna plains, crater lakes, wetlands and the wildlife-rich Kazinga Channel. The park is home to elephants, buffalo, lions, leopards, hippos and over 500 bird species.

Accommodation

Bush Lodge

Your accommodation is at a rustic, eco-friendly camp set along the Kazinga Channel in Queen Elizabeth National Park, offering guests front-row views of roaming wildlife such as hippos, elephants, and antelope. Its bandas and safari tents blend seamlessly into the savanna, providing a comfortable yet wild atmosphere perfect for an authentic safari stay. In the evenings, you can listen to hippos grunting nearby as the sun sets over the plains. The lodge's natural setting creates a peaceful, close-to-nature experience. Friendly staff and warm hospitality make it an inviting base for exploring the park.

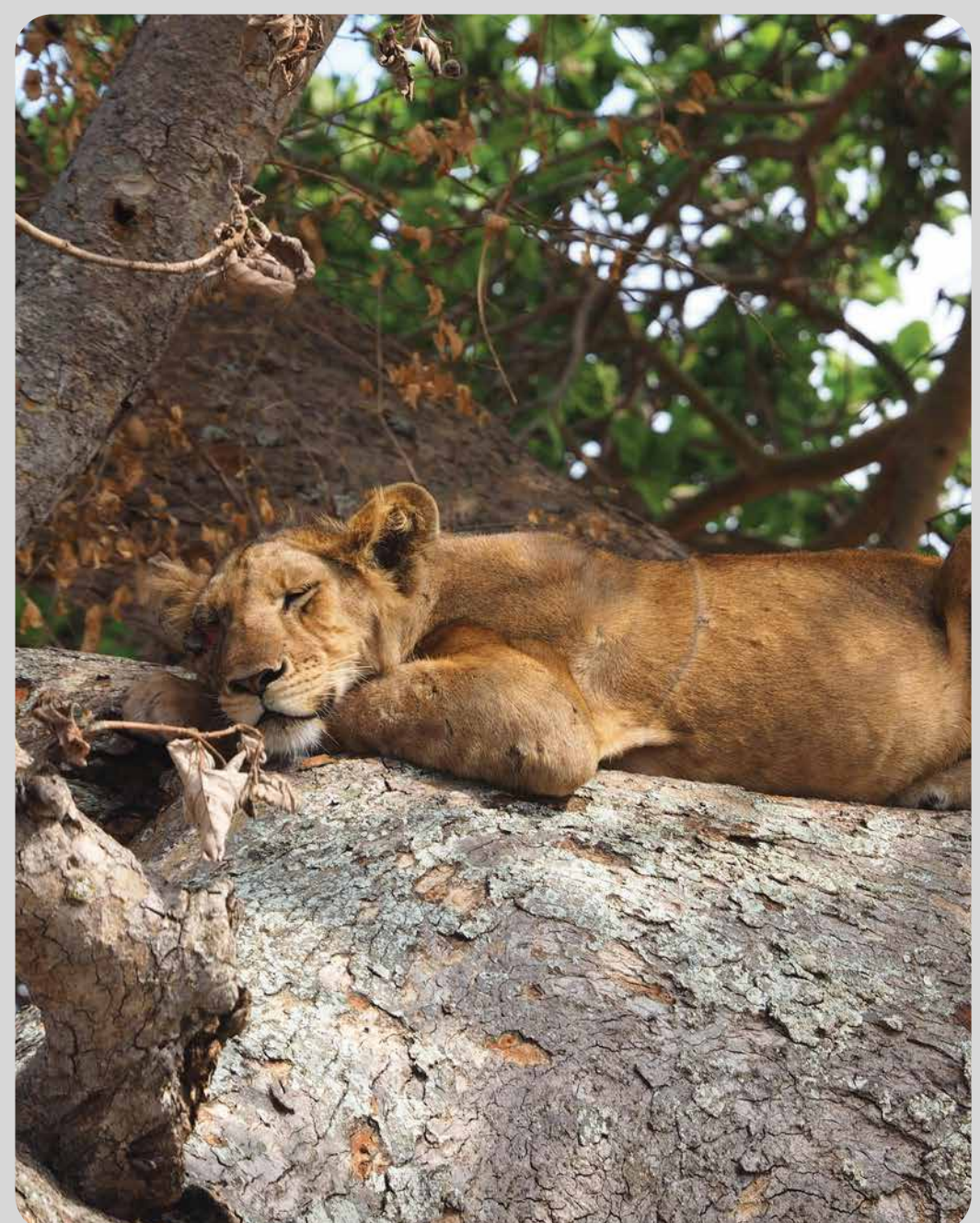
Activities

Kazinga Channel Boat Cruise

- Enjoy a relaxed two-hour cruise along the Kazinga Channel, where hippos, crocodiles, elephants, and buffalo gather along the shores. Birdlife is exceptional, with kingfishers, pelicans and fish eagles often seen throughout the journey. The calm water makes sightings easy, and the open views are perfect for photos. This cruise is a highlight for anyone wanting close-up wildlife encounters.

Game Drive

- Explore the wide-open Kasenyi Plains, known for excellent sightings of lions, antelope, buffalo, and elephants. The open savanna offers great visibility and vibrant wildlife activity, especially in the early morning and late afternoon. Hyenas, warthogs and various antelope add to the diversity of the plains. The soft golden light makes this drive especially rewarding for photographers.



BWINDI IMPENETRABLE FOREST

Bwindi Impenetrable National Park is a UNESCO World Heritage Site and one of the most biologically diverse forests in Africa. Its steep ridges, dense vegetation and misty valleys create a dramatic landscape that feels ancient and untouched. Bwindi is home to nearly half of the world's remaining mountain gorillas along with forest elephants, rare birds and countless plant species. The region is cool, lush and atmospheric with a sense of deep wilderness that makes it one of Africa's most extraordinary destinations.

Accommodation

Lake Murehe Safari Lodge

A peaceful lodge overlooking Lake Murehe with views of the surrounding hills and farmland. It offers a quiet retreat after a challenging day of trekking and its natural setting creates a calming end to each day.

Activities

Gorilla Trekking

- Gorilla trekking is a once-in-a-lifetime adventure that takes you deep into dense forest in search of a habituated gorilla family. The hike can take anywhere from 3 to 8 hours depending on the gorillas' movements, making the journey part of the experience. Spending a full hour with these gentle giants is unforgettable and often described as one of Africa's most moving wildlife encounters.

Batwa Cultural Experience

- Visit the Batwa community to learn about their traditional forest lifestyle, including their music, dance, and ancestral stories. The experience offers meaningful insight into their deep connection with the land and the challenges they face today. Your participation directly supports community conservation and cultural preservation efforts.

Coffee Plantation Experience

- Discover how coffee is grown, harvested, and processed by local farmers who have perfected their craft over generations. You'll walk through the trees, learn each step from bean to cup, and enjoy freshly brewed coffee at the source. It's an engaging, hands-on experience that highlights the pride and skill behind Uganda's famous coffee.



RWANDA : VOLCANOES NATIONAL PARK

Volcanoes National Park is part of the Virunga volcanic range and is one of Rwanda's most iconic destinations. The landscape is dramatic with towering volcanic peaks bamboo forests and rich volcanic soils. The park is known for mountain gorillas golden monkeys and a strong conservation legacy. The surrounding communities are deeply involved in protecting the park which creates a powerful connection between people and wildlife.



Accommodation

Le Bamboo Gorilla Lodge

Accommodation is at a comfortable and welcoming property located close to the park headquarters, offering easy access to gorilla trekking activities. Set against a backdrop of volcanic mountains, the lodge provides beautiful views and a peaceful atmosphere ideal for relaxing before and after your trek. Guests enjoy warm hospitality, hearty meals and cosy rooms designed to make your stay both comfortable and convenient.



Activities

Golden Monkey Trekking

- A gentle forest hike to see the playful golden monkeys which are found only in the Virunga mountains. Their energetic movements and bright colouring make this a delightful experience.

Iby'Iwacu Cultural Village

- A vibrant cultural centre where you can experience traditional Rwandan dance, music, storytelling and daily life. The visit offers insight into Rwanda's heritage and the resilience of its people.

Community Walk

- Meet local residents who live around the park and learn how community-based tourism supports gorilla conservation and sustainable livelihoods.

KIGALI

Kigali is one of Africa's cleanest and most organised cities with a calm atmosphere and a strong sense of pride. The city blends modern architecture with meaningful historical sites and vibrant markets. Kigali is known for its safety, friendliness and cultural depth which makes it an ideal place to end the safari.



Activities

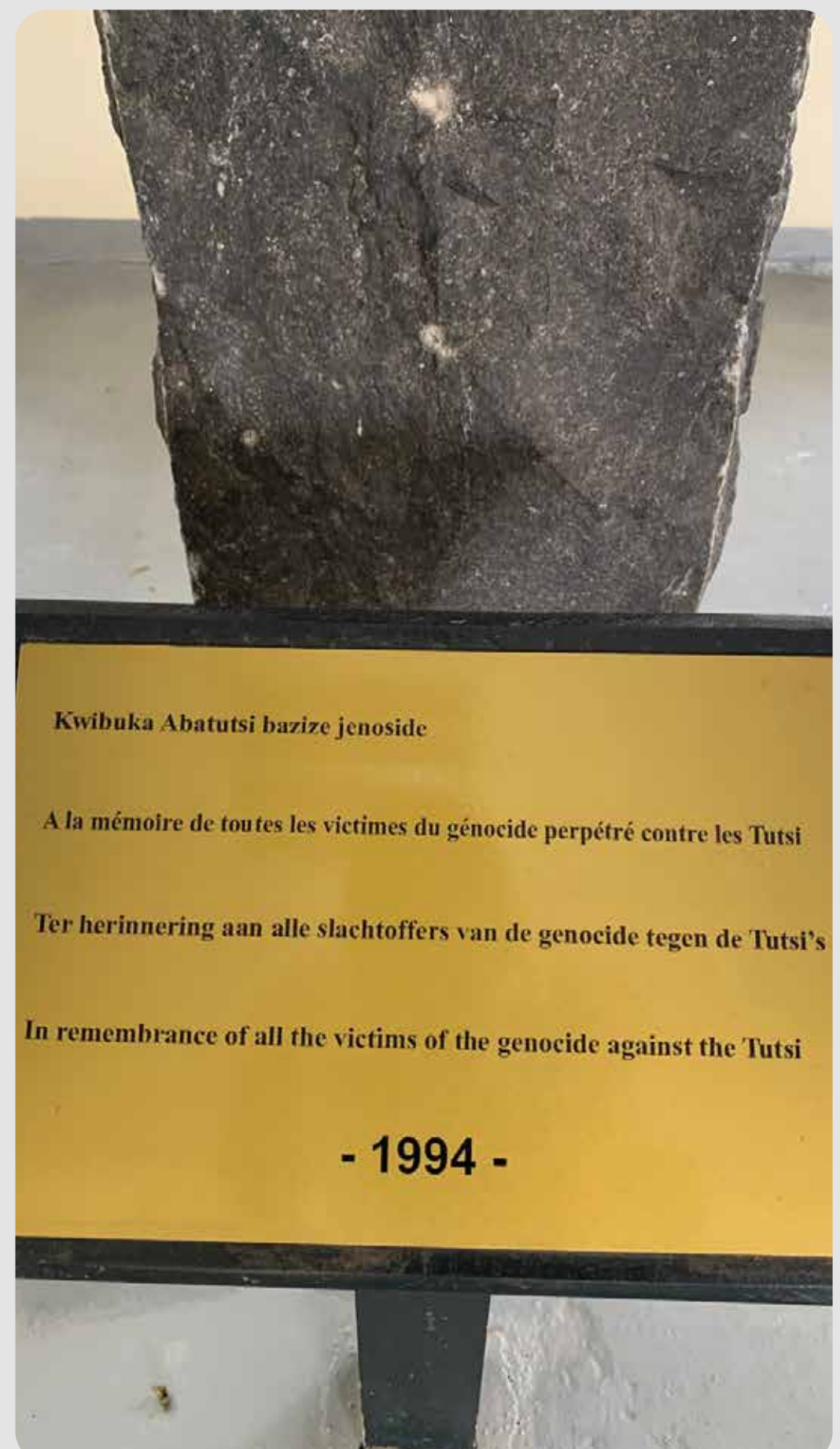
Kigali City Tour

Visit key landmarks including the Kigali Genocide Memorial, traditional craft markets and vibrant cultural centres, gaining meaningful insight into Rwanda's past and present. The tour offers a deeper understanding of the country's history, its remarkable journey of healing, and the strength of its people. Along the way, you'll experience Kigali's clean, modern streets, friendly atmosphere, and the unique blend of tradition and progress that defines the capital.



Departure

After the city tour you are transferred to Kigali International Airport for your flight home.



SPECIAL MEMORIES ARE MADE ON TOUR
WITH US IN UGANDA AND RWANDA

