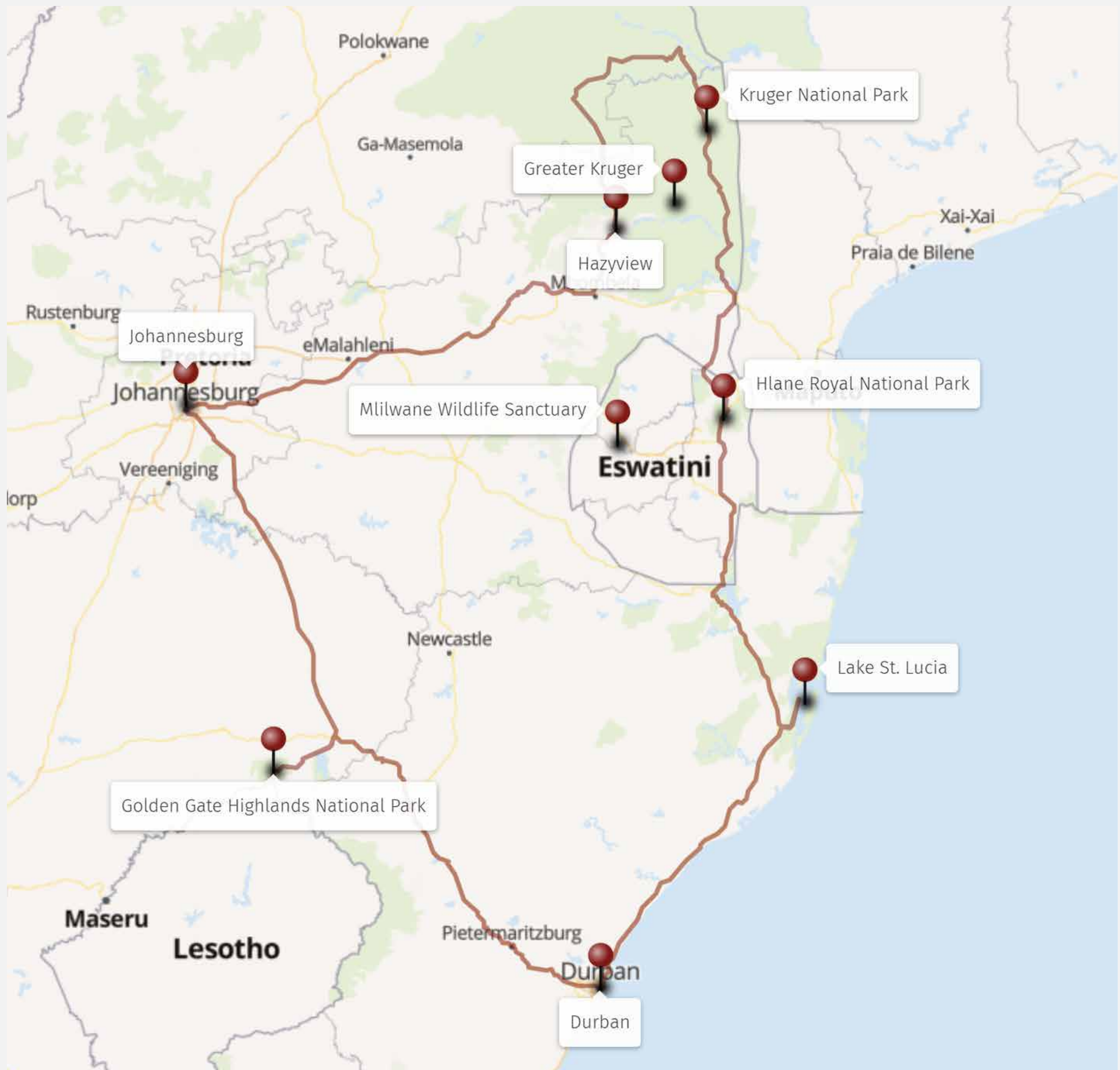




15 DAY BUSH TO BEACH SOUTH AFRICA TOUR



JOHANNESBURG - HAZYVIEW - KRUGER NATIONAL PARK -
ESWATINI - ST LUCIA - DURBAN - GOLDEN GATE -
JOHANNESBURG

South Africa's landscapes and cultures change quickly as you travel. This 15-day journey covers the Panorama Route, Kruger, Eswatini and KwaZulu-Natal. It finishes in the highlands of the Free State and offers something new at every turn.

JOHANNESBURG

Your journey begins in Johannesburg, South Africa's largest and most energetic city. Known affectionately as Joburg or Jozi, this is a city that never stands still. After a long flight, Rosebank is the ideal neighbourhood to land in - it is cosmopolitan, walkable and full of good restaurants and coffee shops.

Accommodation

The Vantage (1 Night)

This contemporary serviced apartment complex is ideally situated in the heart of Rosebank, Johannesburg's lively and walkable neighbourhood. The modern apartments are thoughtfully designed with stylish furnishings, fully equipped kitchens, air conditioning and free Wi-Fi, offering a comfortable and practical base. The location provides easy access to excellent shopping, dining and entertainment options.



Activities

- Today is all about arriving comfortably and easing into your surroundings at a relaxed pace. Once you've checked in and had a moment to settle, you may find you have enough time to stretch your legs and get a feel for the Rosebank neighbourhood. It's one of Johannesburg's most walkable areas with tree-lined streets, a lively atmosphere and plenty of places to stop for a coffee or something light to eat.
- The Keyes Art Mile offers contemporary galleries, design studios and boutique spaces that give a wonderful introduction to the city's creative side, while the Rosebank Rooftop Market provides a colourful mix of crafts, local flavours and everyday bustle.
- As evening approaches, choose one of the many nearby restaurants and enjoy your first South African meal. The food scene here is genuinely outstanding with fresh produce, bold flavours and superb wine to welcome you to the country.



HAZYVIEW

Hazyview is a small town on the doorstep of the Kruger National Park, tucked into the lush subtropical lowveld of Mpumalanga. It makes an ideal base for exploring the Panorama Route, one of South Africa's most dramatic scenic drives, with its towering escarpment views, ancient forests and some of the most spectacular waterfalls in the country.



Accommodation

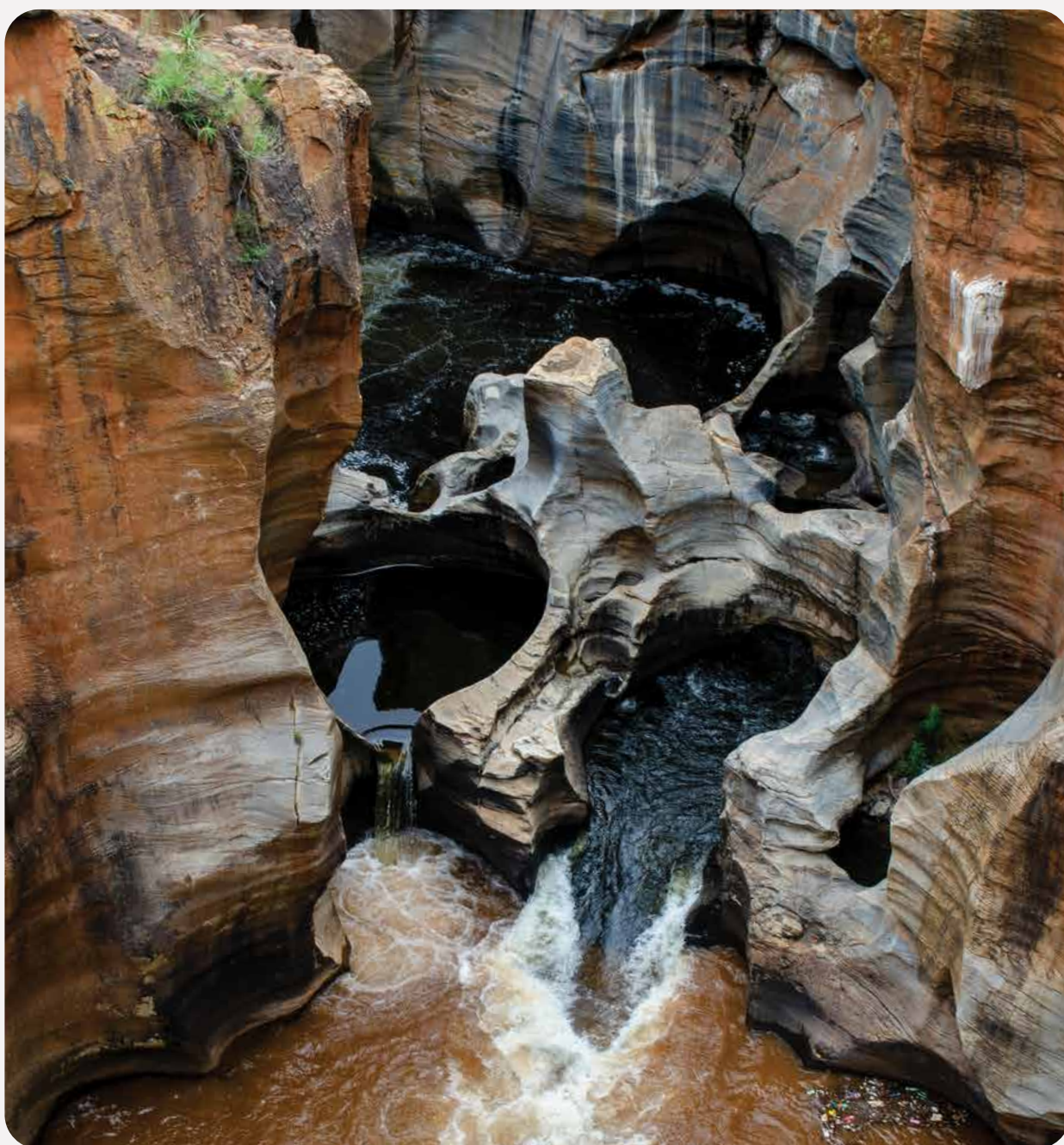
Chestnut Country Lodge (2 Nights)

Your accommodation is at a beautiful and intimate small lodge set in the hills above Hazyview, surrounded by indigenous gardens and with sweeping views across the lowveld. The rooms are generously sized and individually decorated, with a warm and personal atmosphere. The lodge has a pool, a comfortable lounge and a terrace that is a wonderful place to sit at the end of the day.

Activities

Panorama Route

- The Panorama Route is one of South Africa's great scenic drives, following the edge of the Drakensberg Escarpment through a succession of spectacular viewpoints, waterfalls and natural landmarks. Your guide will take you to God's Window, where the escarpment drops sharply away to reveal an enormous panorama over the lowveld; to Bourke's Luck Potholes, a network of extraordinary cylindrical rock formations carved by centuries of swirling floodwaters; and to the Blyde River Canyon, one of the largest canyons on earth and one of the most breathtaking views in Africa. Along the way you will also visit the Lisbon Falls and Berlin Falls, two of the finest waterfalls in the region.



GREATER KRUGER

The Greater Kruger encompasses a vast network of private game reserves that share unfenced boundaries with the Kruger National Park, giving wildlife complete freedom of movement across millions of hectares of wilderness. This is Big Five country of the highest order, and the private reserves offer an intimacy and exclusivity that the public park cannot match. The guides here are exceptional and the game viewing is consistently spectacular.

Accommodation

Umkumbe Safari Lodge (2 Nights)

Your accommodation is at a beautiful, small lodge set on the banks of the Sand River in the Sabi Sand Game Reserve, one of the finest private game reserves in Africa. The lodge is intimate by design, with just a handful of suites that are spacious, luxuriously appointed and positioned to make the most of the riverine bush and wildlife that come and go freely around the property. The food is exceptional, the staff are warm and attentive and the atmosphere is one of genuine bush elegance. Each suite has its own private deck where elephant and buffalo regularly pass within metres.

Activities

Guided Game Drives

- Umkumbe's field guides are among the best in the Sabi Sand Game Reserve, drawing on deep knowledge of the reserve and its wildlife to create meaningful encounters in the bush. Each day begins with a morning drive before dawn, heading out into the cool half-light to track lion, leopard, elephant, buffalo and rhino across a landscape that always has something new to reveal. Afternoon drives set off as the heat of the day softens, continuing into the early night with spotlights sweeping the darkness for elusive nocturnal life. Between drives, you'll have the chance to slow down - sit quietly on your deck, watch the river drift by or slip into the pool to cool off and unwind before the next adventure.



KRUGER NATIONAL PARK

Kruger National Park is one of Africa's greatest wildlife sanctuaries and one of the continent's most celebrated conservation success stories. Covering nearly two million hectares of bush and savannah, it is home to an astonishing diversity of wildlife including all of the big five and over 500 species of bird. Skukuza is the largest and most centrally located of the park's rest camps, perfectly positioned for accessing some of the finest game-viewing roads in the park.



Accommodation

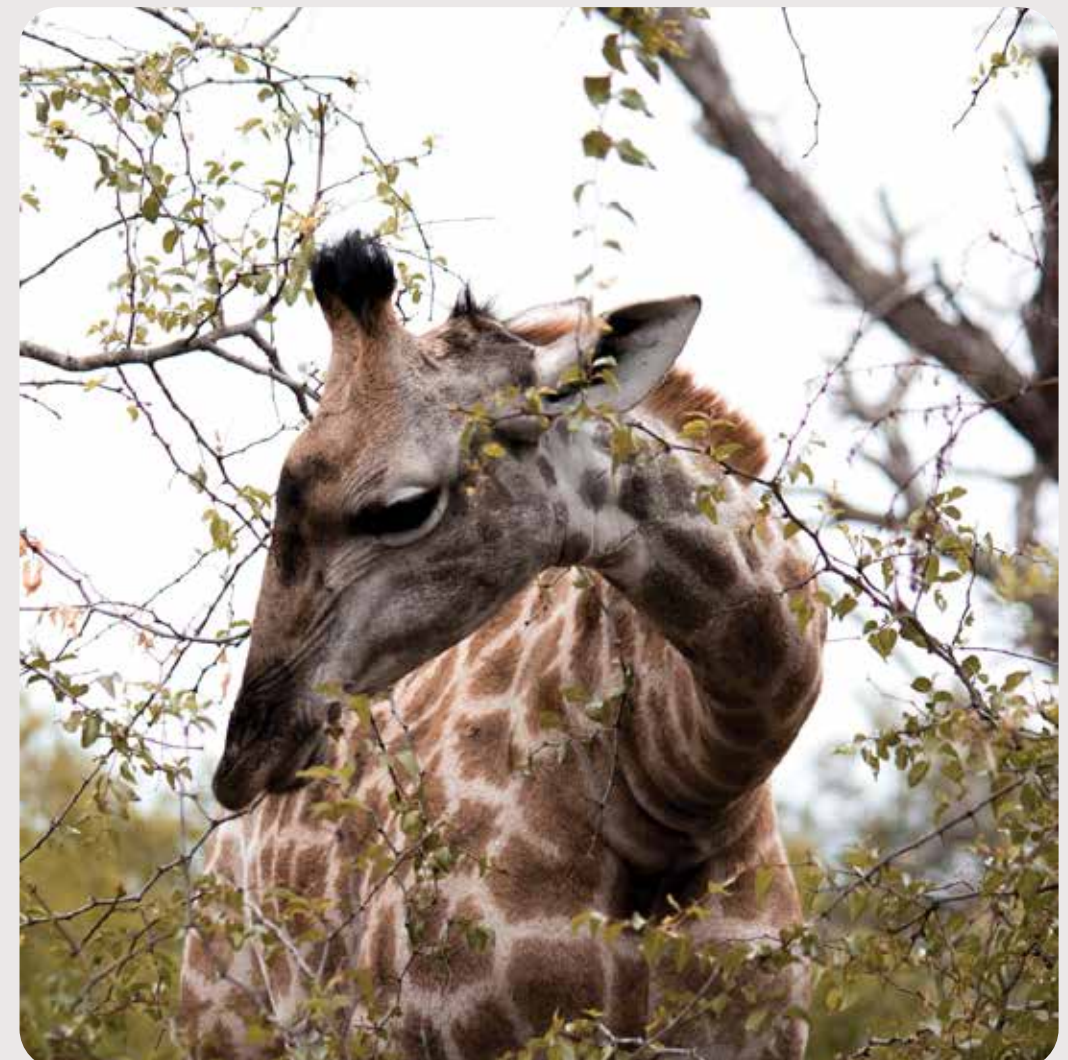
Skukuza Rest Camp (2 Nights)

- Skukuza Rest Camp sits on the banks of the Sabie River, one of the most productive wildlife corridors in the entire park. The camp is large and well-facilitated, with comfortable chalets and bungalows set amongst shady trees and surrounded by the sights and sounds of the bush. A shop, restaurant and petrol station make it a comfortable and well-serviced base, and the riverside location means that elephant, hippo and crocodile are regular visitors to the water's edge just beyond the perimeter fence.

Activities

Game Drives

- You'll head out on guided game drives in Kruger National Park exploring some of the park's most productive wildlife areas around Skukuza. With your guide leading the way, you can simply enjoy the experience as you search for lion, leopard, wild dog, cheetah, elephant, hippo and a wide variety of plains game and birdlife. This part of Kruger is known for excellent sightings and drives often reveal something new around every corner. Dawn and dusk remain the most rewarding times to be out in the bush, when the light is golden, the air is cool and many animals are at their most active.



HLANE ROYAL NATIONAL PARK

Crossing the border into Eswatini is like stepping into a different world. This tiny landlocked kingdom - one of Africa's few remaining monarchies - has a fierce pride in its ancient traditions and a warmth towards visitors that is striking. Hlane Royal National Park is the largest protected area in the country, home to lion, elephant, white rhino and a spectacular diversity of birdlife.



Accommodation

Bhubesi Camp (1 Night)

Bhubesi Camp is a beautifully positioned camp inside Hlane Royal National Park, set amongst mature trees with uninterrupted views across the bushveld. The chalets are simple and well-appointed, with the atmosphere of a genuine bush camp. Self-catering facilities are available, or guests can make use of the camp's communal braai area and spend the evening under an enormous sky with the sounds of the African night all around.

Activities

Guided Game Drive

- Hlane is home to one of the few wild lion populations in Eswatini, as well as large herds of elephant, white rhino, giraffe, zebra and impala. Your guided game drive will take you through the park's most productive areas, with an experienced local ranger leading the way. The birdlife here is outstanding, with a notable white-backed vulture colony and a wide variety of raptors.

Mantenga Cultural Village

- The Mantenga Cultural Village offers a deeply engaging insight into traditional life, set within the beautiful Ezulwini Valley. A guided tour takes you through a reconstructed 19th-century homestead, with demonstrations of traditional crafts, music and dance performed by members of the local community. It is one of the most authentic and thoughtfully presented cultural experiences in the region.



MLILWANE WILDLIFE SANCTUARY

Mlilwane Wildlife Sanctuary is Eswatini's oldest protected area, a beautiful and tranquil reserve in the Ezulwini Valley that was established through the pioneering conservation efforts of one of Africa's great wildlife champions. Unlike Hlane, Mlilwane is free of predators, which means game can be explored on foot, by mountain bike or on horseback as well as by vehicle. The sanctuary has a deeply restorative atmosphere and the surrounding valley is one of the most beautiful landscapes in the kingdom.



Accommodation

Malandela's Guesthouse (1 Night)

Malandela's is a beloved institution in Eswatini, a family-run property and cultural hub in the Malkerns Valley that has been welcoming guests for decades. The guesthouse has comfortable rooms set in lovely garden grounds and a genuinely excellent restaurant on site that serves some of the best food in the country. The property is home to the House on Fire performance venue, a remarkable open-air amphitheatre built into the hillside, and is surrounded by some of the finest arts and craft studios in the region.

Activities

Swazi Candles (Malkerns)

- Swazi Candles in the Malkerns Valley is one of Eswatini's most celebrated craft enterprises, where detailed handmade candles are produced by local artisans in a wide range of shapes and colours. Visit the music-filled workshop to see the process before browsing the centre's craft outlets for something to take home.

Mlilwane Wildlife Sanctuary Game Drive

- A guided game drive or walk through Mlilwane offers the chance to encounter nyala, zebra, warthog, hippo and a wide variety of antelope in a beautiful setting. The sanctuary's network of trails and roads winds through riverine forest and open grassland, with the Mdzimba Mountains forming a dramatic backdrop.



ST LUCIA

St Lucia is the gateway to the iSimangaliso Wetland Park, a UNESCO World Heritage Site and one of the most biodiverse coastal ecosystems in Africa. The town sits at the mouth of a vast estuary where hippo and crocodile share the waterways with flamingos and pelicans and the surrounding wilderness stretches from subtropical forests to open savannahs and pristine Indian Ocean beaches. It is a genuinely magical part of South Africa.



Accommodation

Ndiza Lodge (2 Nights)

Your accommodation is at a beautiful and well-run guesthouse in the heart of St Lucia village, just a short walk from the estuary mouth. The lodge is set in tropical gardens with a pool and a relaxed atmosphere that suits the pace of life here perfectly. The rooms are spacious and comfortable, each with its own character and thoughtful touches. The staff are warm and knowledgeable and the lodge makes an excellent base for exploring both the marine and terrestrial wonders of the iSimangaliso Wetland Park.

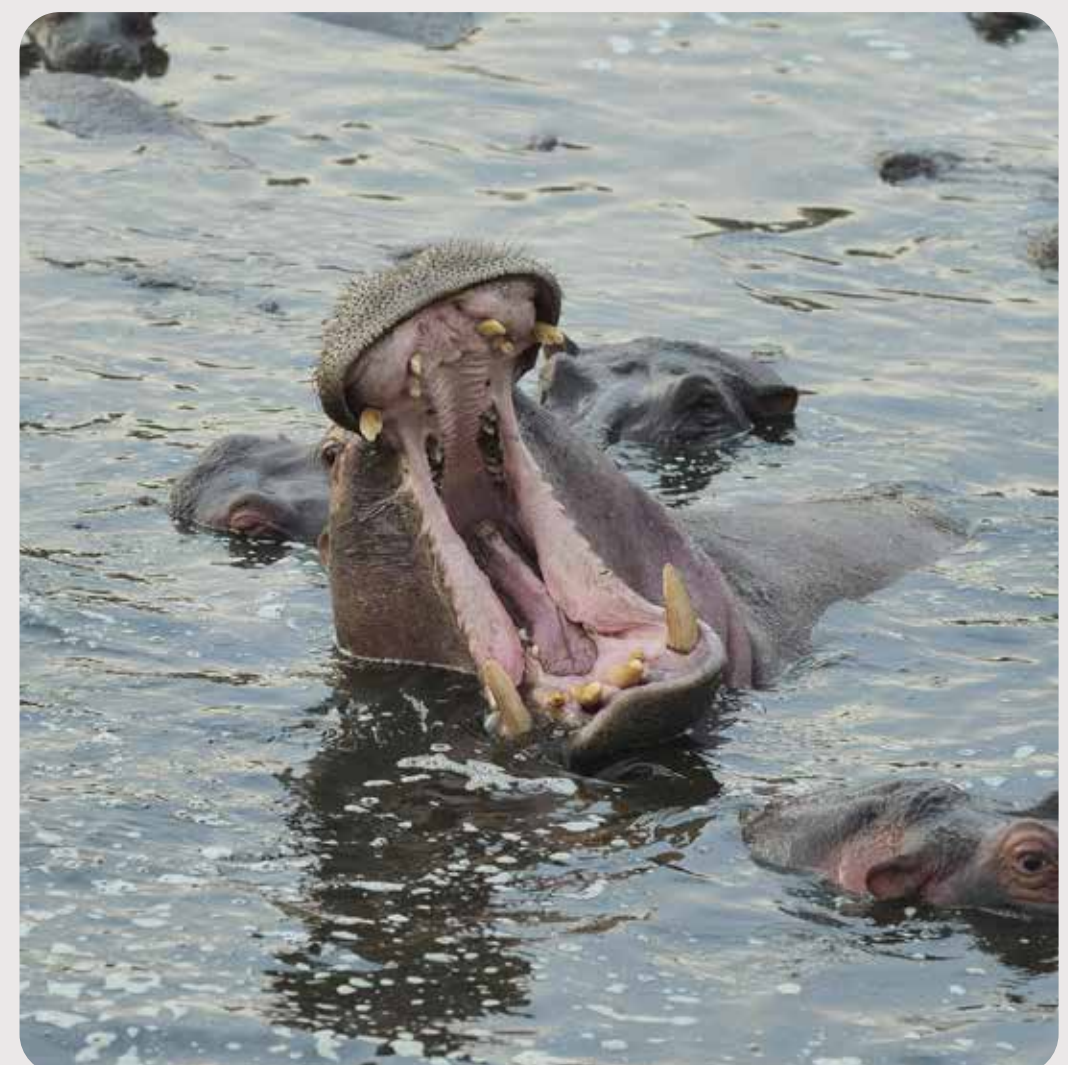
Activities

Guided Cape Vidal Safari

- Cape Vidal is a spectacular stretch of wild coastline within iSimangaliso Wetland Park, where forested dunes rise behind a long beach of Indian Ocean surf and the marine life just offshore is extraordinary. Your guide will lead you through the park in search of rhino, elephant, buffalo, nyala and a remarkable variety of forest birds, before a picnic lunch with the sound of the ocean beside you.

Guided Boat Trip on Lake St Lucia

- A guided boat trip on the St Lucia Estuary is one of the finest wildlife experiences in KwaZulu-Natal. Your experienced skipper will take you out across the open water in search of hippo pods, crocodiles sunning themselves on the banks and the prolific birdlife that makes this estuary one of the top birding destinations in Africa. Pelicans, fish eagles, herons and kingfishers are all regulars.



DURBAN

Durban is South Africa's third largest city and one of the most vibrant and underrated on the continent. Perched on the warm shores of the Indian Ocean, it has a subtropical energy all of its own - a fusion of Zulu, Indian and colonial influences that gives the city its colour, its food and its endlessly interesting character. The Golden Mile beachfront, the Victoria Street Market and the historic Indian quarter of Grey Street are all essential stops.

Accommodation

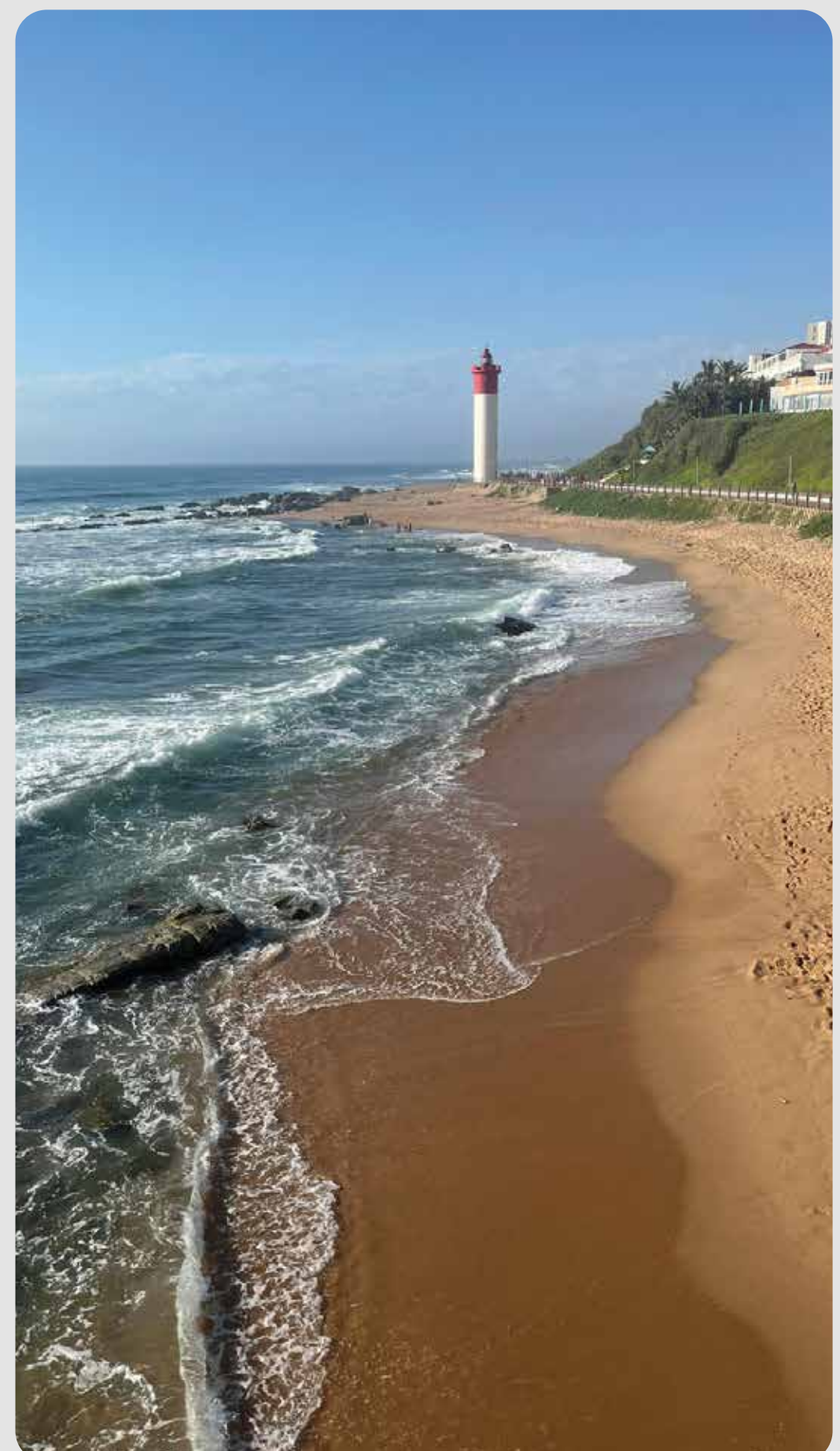
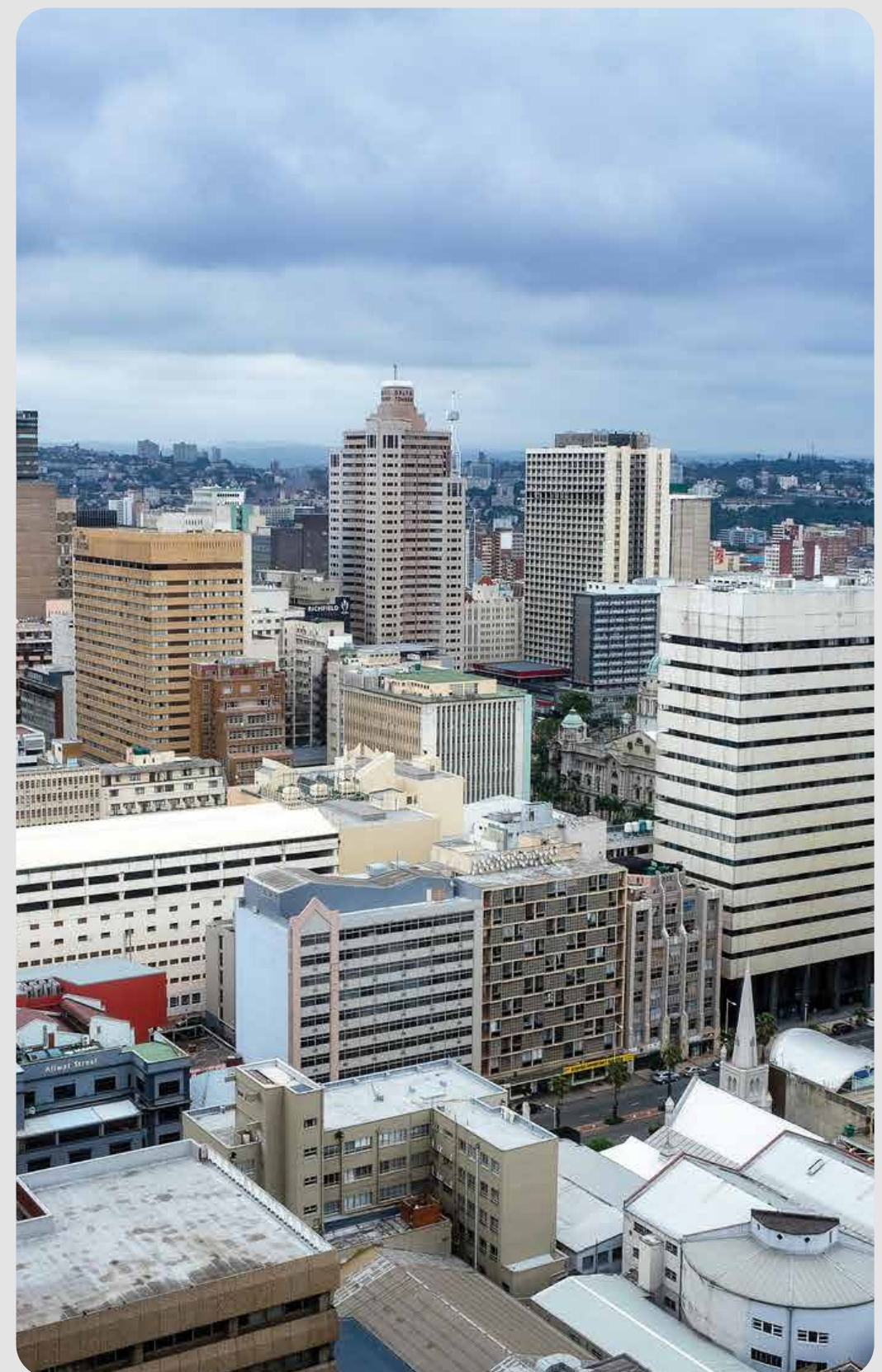
The Benjamin Hotel (1 Night)

The Benjamin sits on Durban's iconic Florida Road, a lively stretch lined with cafés, galleries and some of the city's best restaurants. Behind its historic facade, the hotel offers a quiet, leafy retreat with individually decorated rooms, a shaded garden terrace and an inviting outdoor pool - ideal for cooling off. Its location places you within easy reach of Durban's highlights, including the beachfront, the Moses Mabhida Stadium and the Durban Botanic Gardens, making it a convenient and charming base for exploring the city.

Activities

Durban City Tour

- Discover the layers of Durban on a guided city tour that highlights its cultural, historical and coastal character. Start your exploration in the heart of the city at the Victoria Street Market, where colourful spice stalls, handcrafted goods and Afro-Indian culture come together under one roof. Continue on to the famed Golden Mile, Durban's long beachfront promenade known for its warm Indian Ocean waters, surf culture and lively atmosphere. From here, the tour winds its way through central districts before ascending to the Berea ridge - an elegant, tree-lined suburb offering sweeping views over the city and harbour. As the day winds down, the vibrant Florida Road area, lined with restaurants and cafés in historic buildings, provides the perfect spot to enjoy Durban's buzzing energy.



GOLDEN GATE HIGHLANDS

Golden Gate Highlands National Park sits in the rolling foothills of the Maluti Mountains in the Free State, named for the brilliant ochres and golds of the sandstone cliffs that glow in the afternoon light. It is a landscape unlike anywhere else in South Africa - vast, open and extraordinarily beautiful, with an intimacy and tranquillity that makes it the perfect final stop before returning to Johannesburg.



Accommodation

Glen Reenen Rest Camp (2 Nights)

Glen Reenen Rest Camp sits in a valley at the foot of the park's well-known golden sandstone cliffs, with the Little Caledon River running close by. The chalets are practical, comfortable and well-maintained - a solid base for exploring the area. What stands out most is the setting: the camp is surrounded by wide-open views, grazing wildlife and distinctive cliffs that shift in colour as the afternoon light changes.

Activities

Hiking in Golden Gate Highlands National Park

- The park has an excellent network of walking trails that wind through the highland grasslands, sandstone formations and river valleys. Your guide will lead you on a scenic hike through some of the park's most beautiful terrain, with the chance to spot eland, blesbok, black wildebeest, Burchell's zebra and the endemic bearded vulture that nests in the sandstone cliffs above. The air at this altitude is cool and clear and the light in the late afternoon turns the landscape into something extraordinary.

Sandstone Formations and Viewpoints

- The park's iconic sandstone cliffs and formations are worth exploring. The Brandwag Buttress is the most dramatic of these, a towering golden wall of rock that dominates the valley and changes colour throughout the day as the sun moves across the sky.



WHERE COAST, CULTURE AND WILDLIFE COME TOGETHER, UNFORGETTABLE MEMORIES ARE MADE WITH US IN SOUTH AFRICA.

